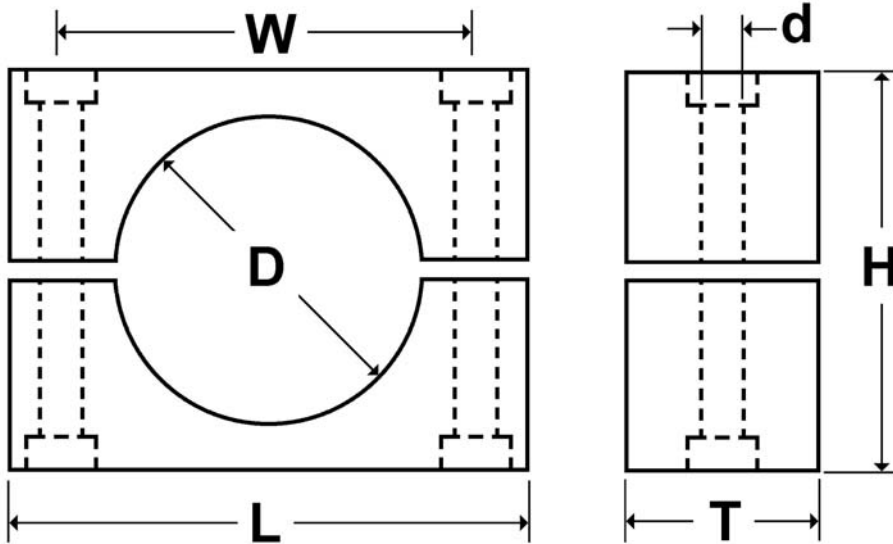




RSB Saddle Clamps

Resin Support Block Saddle clamps **must be** used on a flat surface or customer supplied backing plate



Shown with optional RSB-DP Plate

Personal injury and property damage can occur without proper installation

Always use a lubricant such as Never Seez or Anti Seize to prevent the stainless steel hardware from seizing

Tube O.D.	Clamp Part Number	D	H	T	L	W	d	RSB-DP ** Plate Size
1/4"	DXE-RSB-I02500	1/4"	1.050"	1.185"	1.350"	0.784"	0.275"	1
5/16"	DXE-RSB-I03125	5/16"	1.050"	1.185"	1.350"	0.784"	0.275"	1
3/8"	DXE-RSB-I03750	3/8"	1.050"	1.185"	1.350"	0.784"	0.275"	1
1/2"	DXE-RSB-I05000	1/2"	1.290"	1.192"	1.595"	1.024"	0.275"	2
5/8"	DXE-RSB-I06250	5/8"	1.290"	1.192"	1.595"	1.024"	0.275"	2
3/4"	DXE-RSB-I03400	3/4"	1.394"	1.186"	1.910"	1.301"	0.275"	3
1"	DXE-RSB-I10000	1"	1.394"	1.186"	1.910"	1.301"	0.275"	3
1 1/8"	DXE-RSB-I11250	1 1/8"	1.665"	1.189"	2.258"	1.575"	0.275"	4
1 1/4"	DXE-RSB-I12500	1 1/4"	2.292"	1.182"	2.760"	2.050"	0.275"	5
1 1/2"	DXE-RSB-I11500	1 1/2"	2.292"	1.182"	2.760"	2.050"	0.275"	5
1 3/4"	DXE-RSB-I13400	1 3/4"	2.674"	1.184"	3.394"	2.600"	0.275"	6
2"	DXE-RSB-I20000	2"	2.678"	1.184"	3.394"	2.600"	0.275"	6
2 1/4"	DXE-RSB-I22500	2 1/4"	2.904"	1.184"	3.394"	2.600"	0.275"	6

** RSB Reinforcement Plates must be ordered separately from RSB Clamps

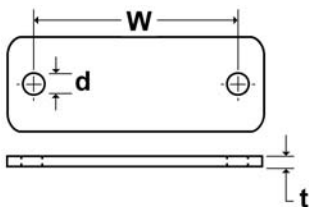


Plate Part Number	d	t	W	RSB-DP Plate Size
DXE-RSB-DP-1	0.275"	0.119"	0.784"	1
DXE-RSB-DP-2	0.275"	0.119"	1.024"	2
DXE-RSB-DP-3	0.275"	0.119"	1.301"	3
DXE-RSB-DP-4	0.275"	0.119"	1.575"	4
DXE-RSB-DP-5	0.275"	0.119"	2.050"	5
DXE-RSB-DP-6	0.275"	0.119"	2.600"	6

Dimensions shown are in Inches



©DX Engineering 2008

P.O. Box 1491 Akron, OH 44309-1491

Phone 800-777-0703 - Tech Support and International 330-562-3200

Fax 330-572-32679 - E-mail DXEngineering@DXEngineering.com